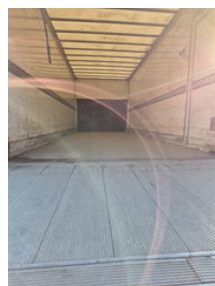
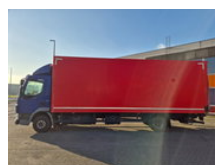


## DAF LF 210 FA EEV

### General features

Brand	DAF
Model	LF
Subcategory	Box
Odometer reading	654.800km
Construction year	2012
Date of first registration	17-12-2012
Condition	Used
Fuel	Diesel
Emission class	Euro 5
Reference	OL419820



### Characteristics

Empty weight	6.125kg
Load capacity	5.865kg
GVW	11.990kg

Serial number

XLRAE45FF0L419820

---

Cylinder contents

4.462cc

# DAF LF 210 FA EEV

## Technical specifications

Number of axes	2
Axis configuration	4x2
Transmission	Automatic
Engine output	210hp

## Accessories

- Air conditioning
- Electrically operated windows
- Disc brakes
- Power steering